

# Mounting instructions



**DIMENSIONS in inch (cm)**

Type	D	d	s min*
10-11	5 1/8 (13)	2 3/64 (5.2)	3 15/16 (10)
15-16	7 3/32 (18)	3 1/32 (7.7)	4 23/32 (12)
20-21	9 1/16 (23)	4 1/64 (10.2)	5 29/32 (15)

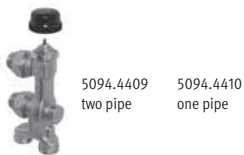
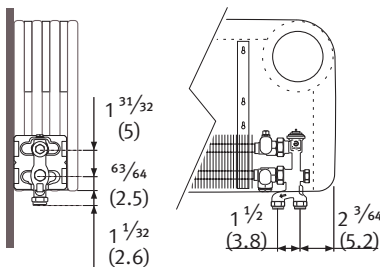
\* Smaller dimensions can decrease output.  
*Note: dimensions in "( )"* are shown in centimeters.

Technical drawing showing dimensions: L, L- (14 49/64 (37.5)), H, d, D, s\*, 2 53/64 (7.2), 3 15/16 (10), 5 29/32 (15), 3 3/16 (8.1), 1 7/32 (3.1).



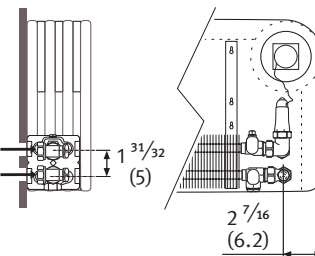
## OPTION

### Vertical pro thermostatic valve

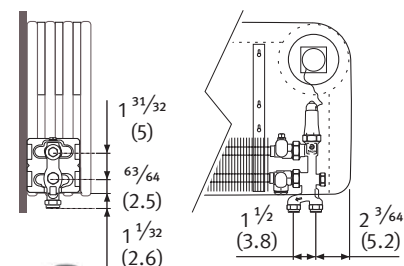


Only to be used with an electrically controlled zone valve, a manual head or thermostatic head with external sensor.  
**Don't use with standard thermostatic head.**

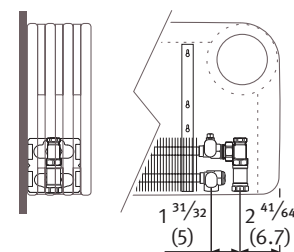
### Vertical double angled thermostatic valve with integrated control



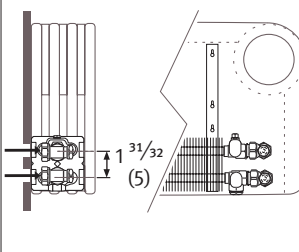
### Vertical pro thermostatic valve with integrated control



### Lockshield 1/2" and extension pipe

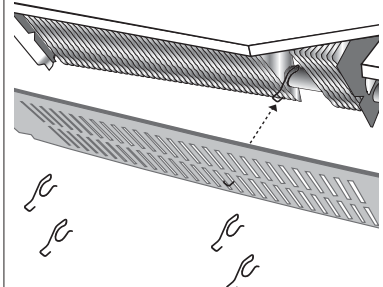
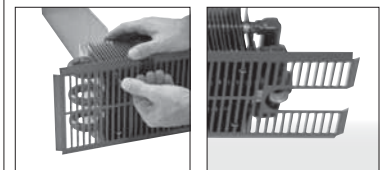
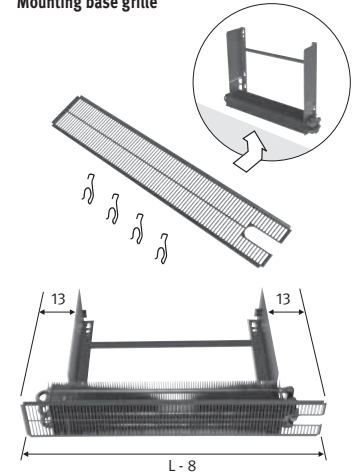


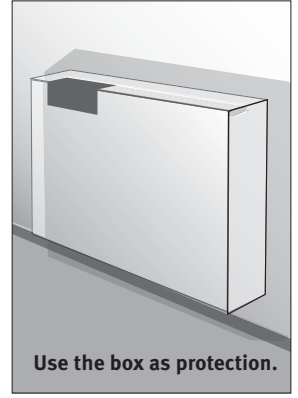
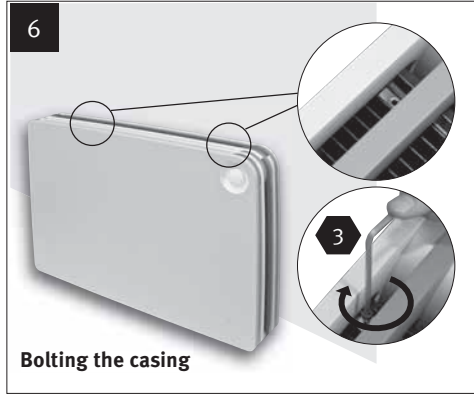
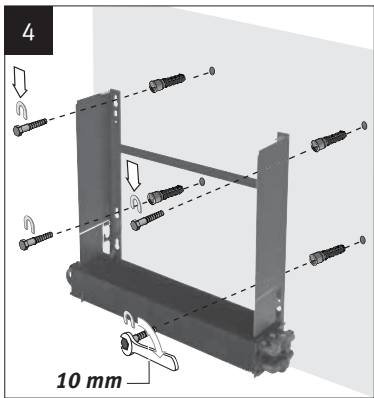
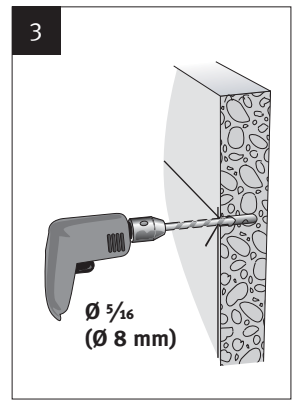
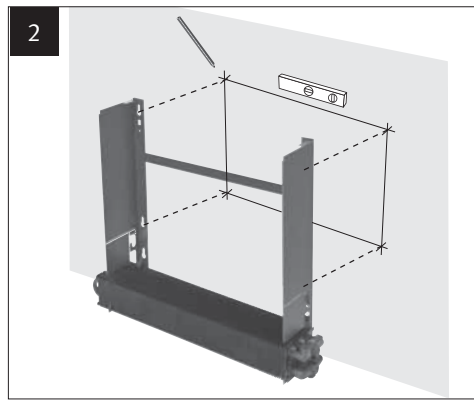
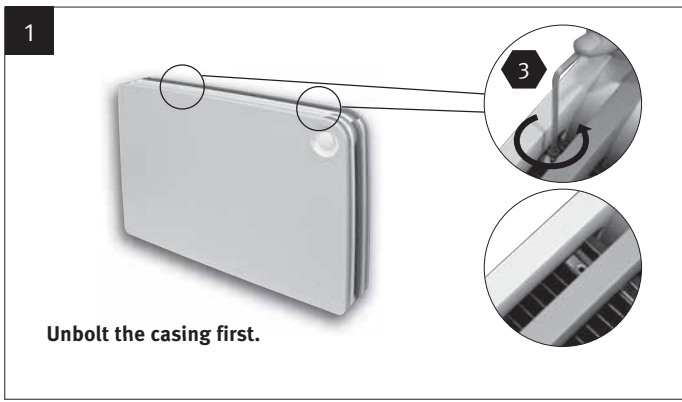
### 2 lockshields 1/2"



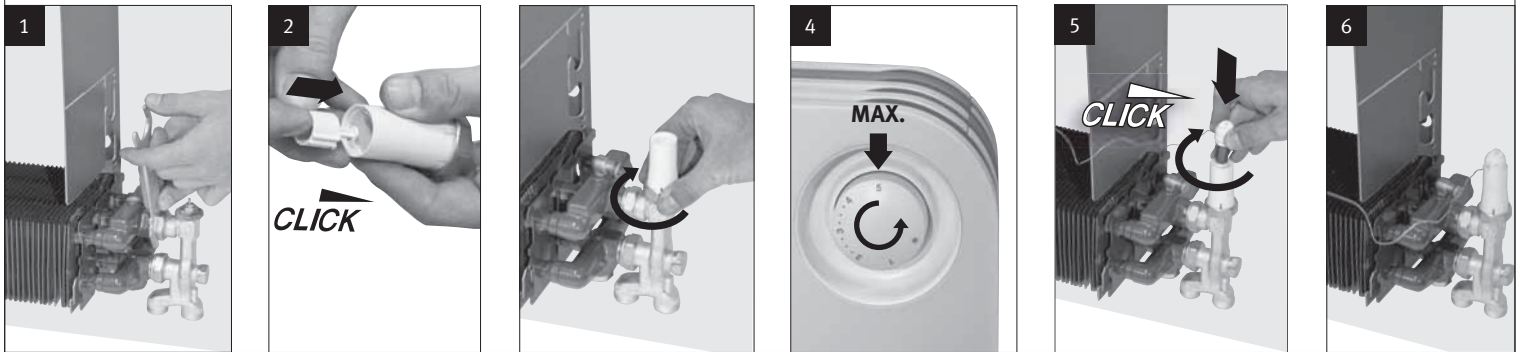
## OPTION

### Mounting base grille





**OPTION VALVE**



**LIMITING AND BLOCKING THE SETTING RANGE**

Limiting the min. temperature **stop**

**stop** Limiting the max. temperature

Lock setting is done by combining the upper and lower limiter setting.

