



**jaga**

*Energy*  
**SAVERS**  
**LOW-H<sub>2</sub>O**



**MINI FREESTANDING**  
The most powerfull heat emitters for  
condensing boilers and heat pumps

[WWW.JAGA-USA.COM](http://WWW.JAGA-USA.COM)  
[WWW.JAGA-CANADA.COM](http://WWW.JAGA-CANADA.COM)





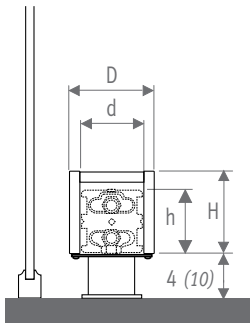
**MINI**  
freestanding cabinet



## MINI, STRIKINGLY DISCREET

Minimum dimensions, maximum warmth. Discreetly hidden it is able to convert the chilly air near a window into pleasant heat. Extremely suited for spaces with full height glazing, for window displays, winter gardens and under window seats. Starts at 3" (8) height.

### DIMENSIONS



Mini is available in lengths from 23.5" (60) to 118" (300).

### OUTPUT

H	Type	d	h	D	
3 5/32 (08)	09	4 (10)	2 (5)	5 1/8 (13)	477
	14	6 (15)	2 (5)	7 3/32 (18)	780
	19	8 (20)	2 (5)	9 1/16 (23)	1071
5 1/18 (13)	05	2 (5)	4 (10)	3 5/32 (8)	370
	10	4 (10)	4 (10)	5 1/8 (13)	567
	15	6 (15)	4 (10)	7 3/32 (18)	951
	20	8 (20)	4 (10)	9 1/16 (23)	1342
9 1/16 (23)	06	2 (5)	8 (20)	3 5/32 (8)	605
	11	4 (10)	8 (20)	5 1/8 (13)	1127
	16	6 (15)	8 (20)	7 3/32 (18)	1472
	21	8 (20)	8 (20)	9 1/16 (23)	1916

Average output in BTU/h foot with 65°F (18.3°C) entering air and 1 GPM flow rate. Mean water temperature of 160°F (71.1°C).

## THE MOST POWERFUL HEAT EMITTERS



### Significant energy savings

The most efficient and modern fin tube element, that complies with actual AND future building standards and technologies.

### For all low temperature hydronic systems

Perfectly suited for condensing boilers, heat pumps and solar systems.

### The perfect partner for radiant heating

for improved temperature control and energy efficiency.

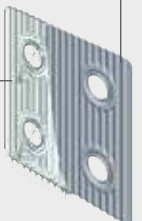
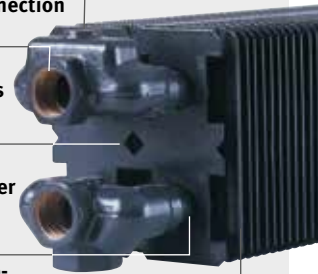
1/8" NPTF airvent connection

Brass collectors with 1/2" NPTF connections

With dirt-repellent and dust-proof lacquer in graphite grey

Up to 16 parallel copper tubes for the best heat emission

55 Corrugated aluminum fins per foot for super heat-output at low water temperatures



Note: dimensions in "( )" are shown in centimeters.

